

travel nagasaki

長崎で、会いましょう。



暮らしのそばに、ほら世界。

NAGASAKI

Enjoy Nagasaki

- Nagasaki City official tourism website travel nagasaki
Instagram Official Visitors' Guide
See Nagasaki on foot! Nagasaki Saruku
Have fun in Nagasaki! Play Nagasaki
Gourmet website introducing the delicious food of Nagasaki Nagasaki Cuisine
Website for delicious fish in Nagasaki Nagasaki is Sashimi City

Barrier-free Information

- Nagasaki City tourism information website Barrier-free Information
For wheelchair rental and bathing assistance Nagasaki Universal Tourism Center
Help for Travelers

Help for Travelers

- Baggage delivery service
Hands-free Nagasaki Sightseeing
Stroller rental service
Babyca!

For everyone staying in Nagasaki City Accommodation Tax Information

Nagasaki City introduced an accommodation tax on April 1, 2023.

Table with 2 columns: Accommodation fee (per person per night) and Tax rate. Rows include < 10,000 yen, 10,000 yen < 20,000 yen, and 20,000 yen >=.

Inquiries Nagasaki City Hall, Finance Department, Municipal Tax Section TEL.095-829-1133

Location Nagasaki City (Nagasaki Station)

Table showing transportation routes from Nagasaki Station to various locations like Nagasaki Airport, Sasabo City, and Urizen City.

Convenient transportation

- Kanko Taxi (Nagasaki City Taxi Association)
Nagasaki Ropeway
Airport Liner
Nagasaki City Call Center (Ajsai Call) 095-822-8888

Castella

The origins of the castella cake, which is a favorite of Japanese people, goes back to a confectionery introduced from Portugal.



Many famous and venerable establishments. Find your favorite castella!

Karasumi

One of Japan's three great delicacies, made with only mullet roe and salt. In addition to the well-known dried karasumi, there is also fresh karasumi, which can be used in pasta and other dishes.



Sara udon

Features two types of noodles, "thick" and "thin," each with a different texture and flavor.



Yoriyori

A spiral-shaped Chinese snack made from fried wheat flour. When it was introduced to Nagasaki, it was called "tojinmaki." The local nickname for it became "yoriyori."

Ramune

Nagasaki was also the first place in Japan to produce ramune. Many different things came to Japan via Nagasaki, and finding them is one of the joys of sightseeing here.

Its distinctive texture and refreshing sweetness are addictive!

Braised pork bun

This is a Nagasaki specialty made from slowly simmered pork cubes sandwiched between chewy manju bun dough.

Perfect as a walking snack!

White tuna rolls

Made with wild varieties of yellowtail caught in Nagasaki and available at supermarkets.

Nagasaki oden

Longan-shaped kamaboko is delicious!

Dejima bara-iro

Characterized by its rose-colored flesh, this beef is produced by only eight farms in the city.

Milkshakes in Nagasaki

Available at a variety of locations throughout the prefecture. The refreshing sweetness and crunchy texture are irresistible!

Champon

This dish was invented by Chin Heijun to provide cheap, nutritious food for poor and hungry Chinese students who were studying in Japan. It is still loved by many people today.

Nagasaki soul food

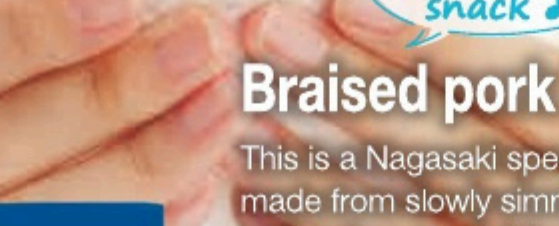
Different stores offer different tastes, so find your favorite champon!

Souvenirs

Learn about a host of products, from classics to the latest items, that are perfect as Nagasaki souvenirs!

Cuisine

The first question when traveling "Where to eat?" Introducing Nagasaki, a city rich in history, cuisine, and cultural exchange!



Hand towels

Original designs featuring landscapes, festivals, buildings and other motifs. These hand towels are full of Nagasaki charm.

Vidro

When blown into, this fun, traditional handicraft produces a sound thanks to the elasticity of glass.

Loquat jelly

Nagasaki boasts the highest production of loquats in Japan. This loquat jelly, made of an entire loquat wrapped in jelly, makes a great souvenir!



Nagasaki Sashimi Shabu-shabu

Expertly selected fresh fish, carefully chosen by skilled chefs. First, enjoy it as sashimi. Next, lightly swish it in hot broth (shabu-shabu). Then finish with a final course to complete this "three-stage" tasting experience which showcases the very best of Nagasaki's fresh seafood.

Turkish rice

Like a "kids' lunch for adults," with pilaf, cutlet, spaghetti! Nagapolitan and other dishes all on one plate, this is an iconic, local gourmet dish of Nagasaki.



City Center



Nagasaki Shinchu Chinatown

Enjoy the exotic atmosphere of this city, one of Japan's three largest Chinatowns alongside those in Yokohama and Kobe, as well as the gourmet food and shopping that goes with it!



Oura Cathedral

One of the locations that are part of the "Hidden Christian Sites in the Nagasaki and Amakusa Region" World Heritage Site. It is the oldest surviving church in Japan, built after the country was opened to the world.

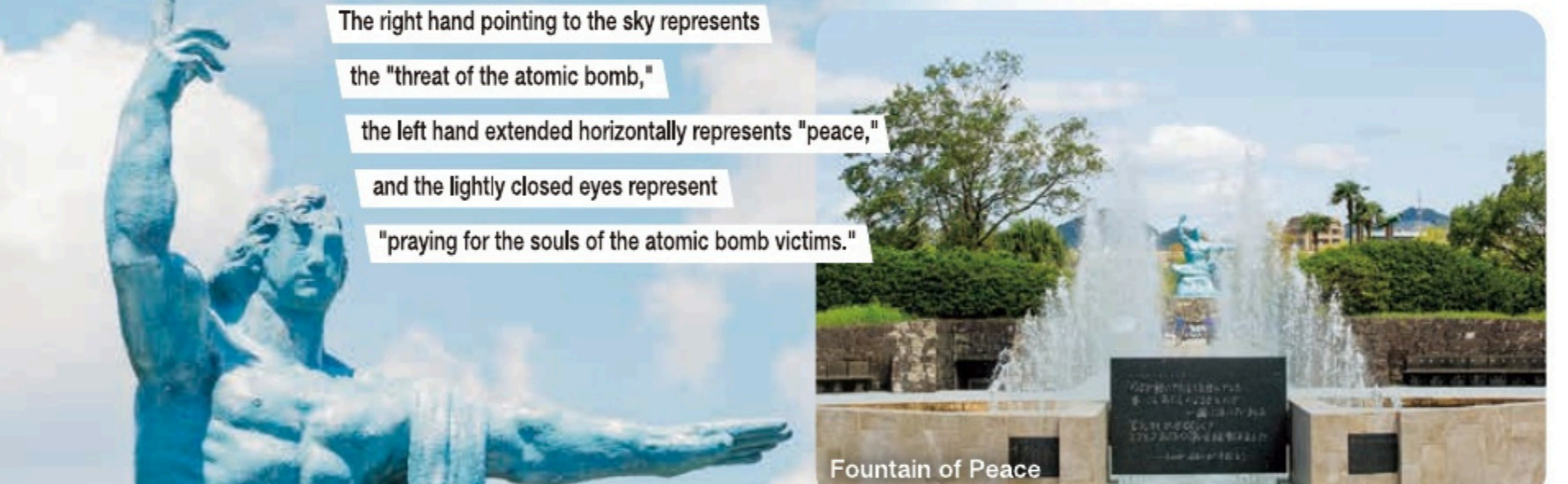


Glover Garden

Contributed to the modernization of Japan! Get a panoramic view of the former Glover House (a World Heritage Site) and Western-style buildings, as well as Nagasaki Port, which attracted many great men.

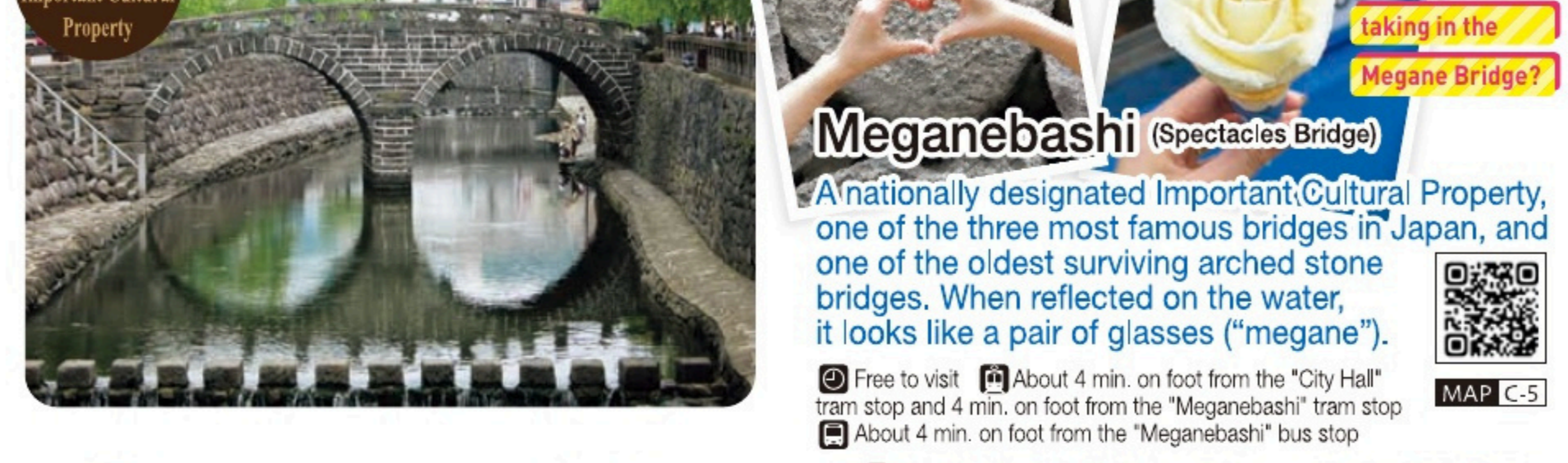
Night View of Nagasaki

Enjoy the romantic night view that has been named one of the world's three new greatest night views! Mt. Inasa is a popular, photogenic spot bustling with people coming to check out the night view.



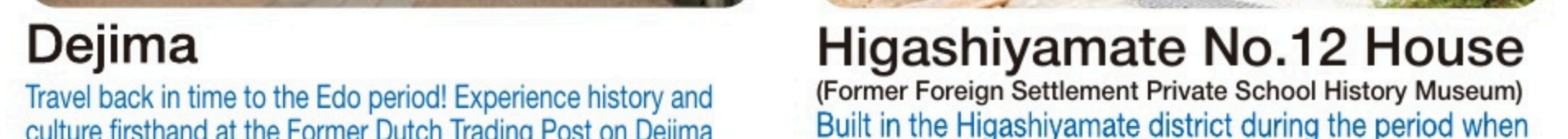
Peace Park (Peace Statue and Fountain of Peace)

A space allowing never to repeat such a tragic war and for praying for the repose of the souls of the atomic bomb victims and for lasting peace.



Meganebashi (Spectacles Bridge)

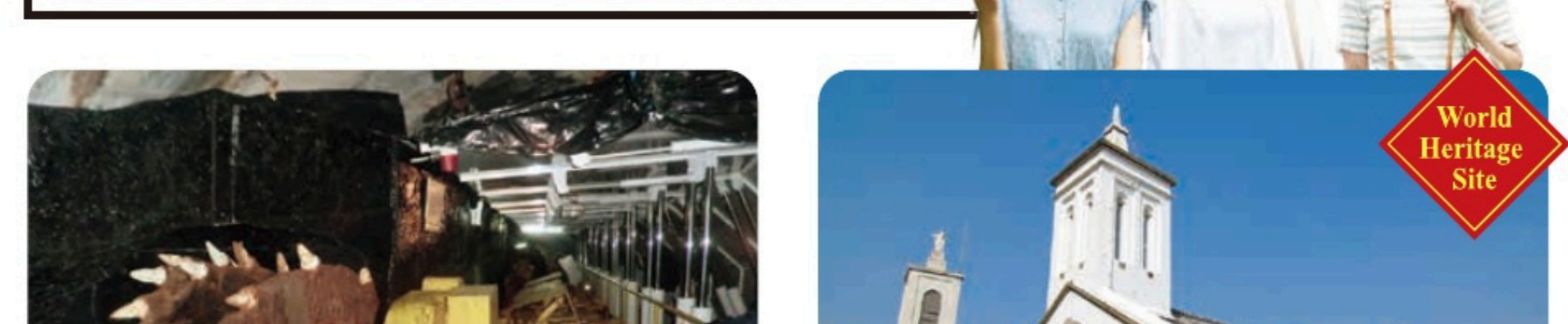
A nationally designated Important Cultural Property, one of the three most famous bridges in Japan, and one of the oldest surviving arched stone bridges. When reflected on the water, it looks like a pair of glasses ("megane").



Dejima

Travel back in time to the Edo period! Experience history and culture firsthand at the Former Dutch Trading Post on Dejima a nationally designated historic site where Nagasaki's unique Wakaran culture—a mixture of Japanese, Chinese and Dutch culture—was born.

If you haven't seen these, how can you say you've seen Nagasaki? Kinkai & Sotome / Nomozaki Area



Ikeshima Coal Mine Site

Kyushu's last coal mining island, which supported the growth of modern Japan. This is the only coal mining facility in Japan where you can take a coal mining tour on an electric trolley.

Shitsu Church

(Hidden Christian Sites in the Nagasaki and Amakusa Region) This is a single-story brick building with beautiful white plaster walls. This church was built by Father de Rotz, a French missionary who dedicated his life to Sotome.

Hashima Island (Gunkanjima)

A World Heritage Site floating in the majestic sea. It was once a thriving coal mining site, and you can experience its history of prosperity and decline.

Benex Dinosaur Museum

A museum where you can see, touch and experience dinosaur history. The 13m long replica of a Tyrannosaurus rex skeleton is truly a sight to behold!

For all the classic spots! Standard itinerary

- 1 Glover Garden
2 Oura Catholic Church
3 Nagasaki Shinchu Chinatown Lunch
4 Dejima
5 Meganebashi (Spectacles Bridge)
6 Peace Park and Atomic Bomb Museum
7 Night view (Mt. Inasayama Observatory)

Classic Half-day Itinerary

- 1 Gunkanjima Landing & Cruise
2 Nagasaki Dejima Wharf
3 Nagasaki Kaido Kamome Market

Classic 1-day Itinerary

- 1 Glover Garden
2 Oura Catholic Church
3 Nagasaki Shinchu Chinatown Lunch
4 Dejima
5 Meganebashi (Spectacles Bridge)
6 Peace Park and Atomic Bomb Museum
7 Night view (Mt. Inasayama Observatory)

Spring

- Nagasaki kite-flying Tournament
Nagasaki Kunchi

Summer

- Nagasaki Minato Festival
Nagasaki's 380 year old autumn festival

Winter

- Nagasaki Lantern Festival

<Map Legend>

- Port
- JR Station
- Bus Terminal
- Post Office
- Police Station
- Hospital
- Bank
- Currency Exchange
- School
- Museum
- Shrine
- Temple
- Church
- Restroom (with no wheelchair accessible toilets)
- Restroom (with wheelchair accessible toilets)
- Restroom (with wheelchair accessible toilets and automate facilities)
- Shopping
- Traffic Light
- Bus Stop
- Tram Stop
- Parking Lot
- Night View Point

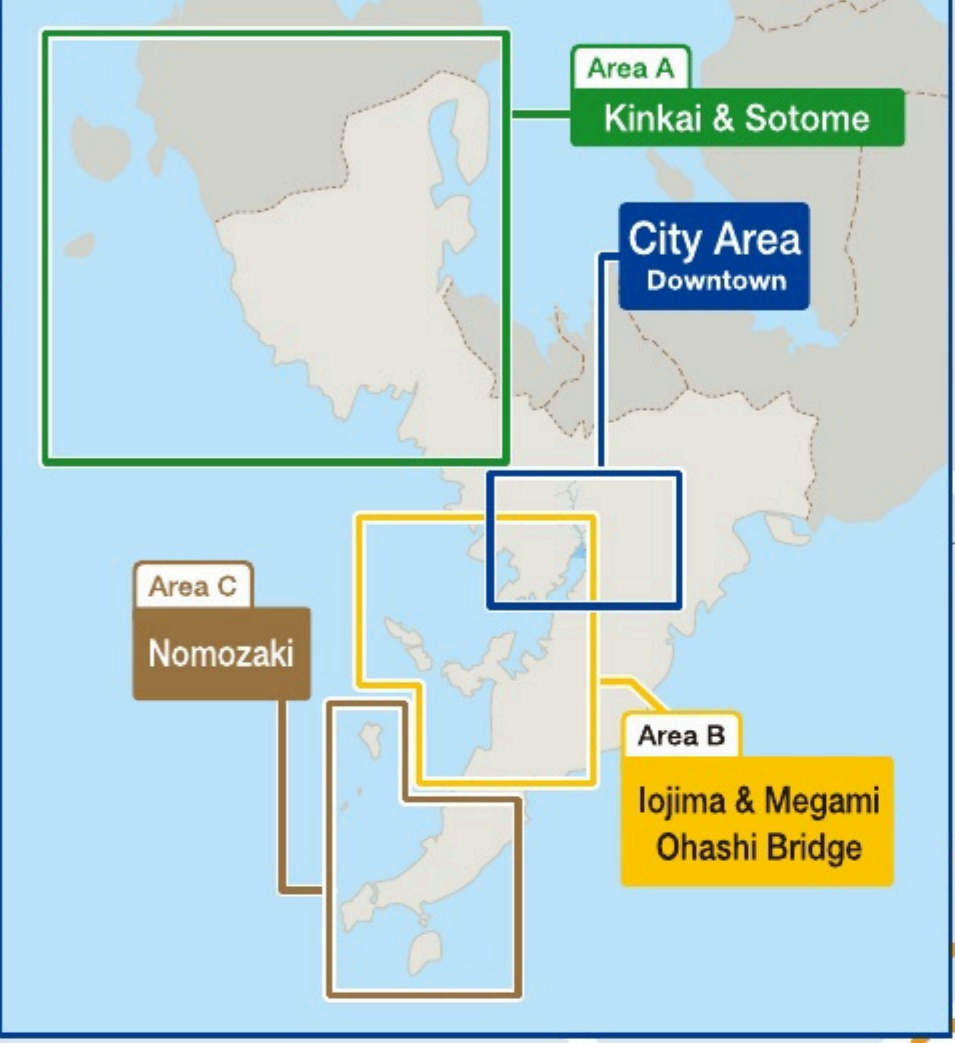
\* You can enjoy various night views, from close-up to distant scenery.

... Littering / Smoking Prohibited Area

# City Area Map



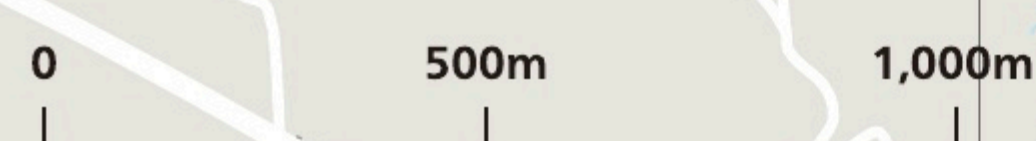
## Map of Nagasaki



Convenient with your smartphone! Digital Map



\*No app download necessary.



Easily get from one sightseeing spot to the next!

## How to Use Tram & City Bus

### Tram

For taking the tram, please get on at the closest tram stop from each Sightseeing Spot.

Nagasaki Electric Tramway Co., Ltd. ☎095-845-4113

Fare (One-way) All Lines

Adults 150 yen / Infants & Children 80 yen

Mobile Pass For smartphones only

Mobile One-Day Pass Adults 600 yen / Infants & Children 300 yen

Mobile 24-Hour Pass Adults 700 yen / Infants & Children 350 yen

Short distance discount (110 yen for two travel sections)

The fare for travel within two sections is 110 yen (60 yen for infants and children).

Requires use of a nationwide interoperable transportation IC card, such as nimoca.

\*If you do not tap your IC card when boarding, the short-distance discount will not be applied.

### About transfers

The tram stops where you can transfer are Nagasaki Eki-mae, Nishimama-no-machi, Shinchi Chinatown, and City Hall.

If you transfer using a nationwide interoperable transportation IC card, such as "nimoca," the second fare will be free.

(However, even if you use an IC card, the transfer discount may not apply. Please check using the code on the right.)

\*If you pay the fare in cash, the transfer discount will not be applied.

### City Bus

This map basically sets "Nagasaki Station" as a starting point of your travel. The word "G" (GO) and "B" (BACK) written near each Sightseeing Spot indicate the bus number that you should take for your destination (GO) and Nagasaki station (BACK).

(Though bus information for this map is mainly operated by Nagasaki Bus, you can also use Nagasaki Ken'ei Bus.)

Nagasaki Bus (Nagasaki Motor Bus Co., Ltd.) ☎095-826-1112

Nagasaki Ken'ei Bus ☎095-826-6221

### Mobile Pass

Mobile One-Day Pass Adults 600 yen / Infants & Children 300 yen

Mobile 24-Hour Pass Adults 700 yen / Infants & Children 350 yen

### Convenient shuttle buses

Nagasaki Sightseeing Route Bus Operates on weekends and holidays. Directly connects Glover Garden and the Atomic Bomb Museum, passing through major tourist sites.

Travel time: About 25 min.; Every 30 min.; 20 round trips per day

### One-Day Pass (Paper)

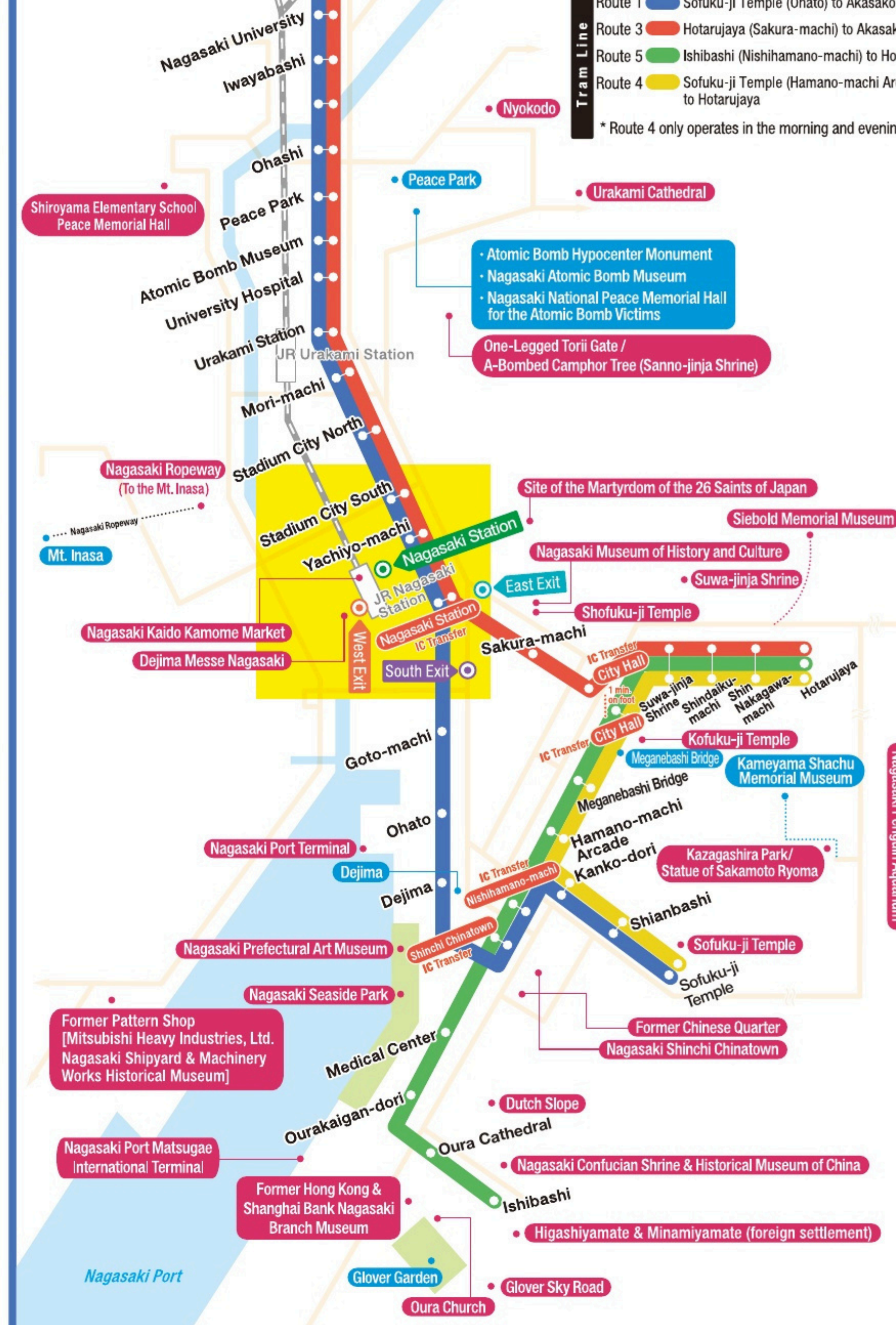
Paper-format 1-Day tram passes and Nagasaki Bus 1-Day passes are sold at the General Tourist Information Center inside Nagasaki Station.

Adults 600 yen / Infants & Children 300 yen

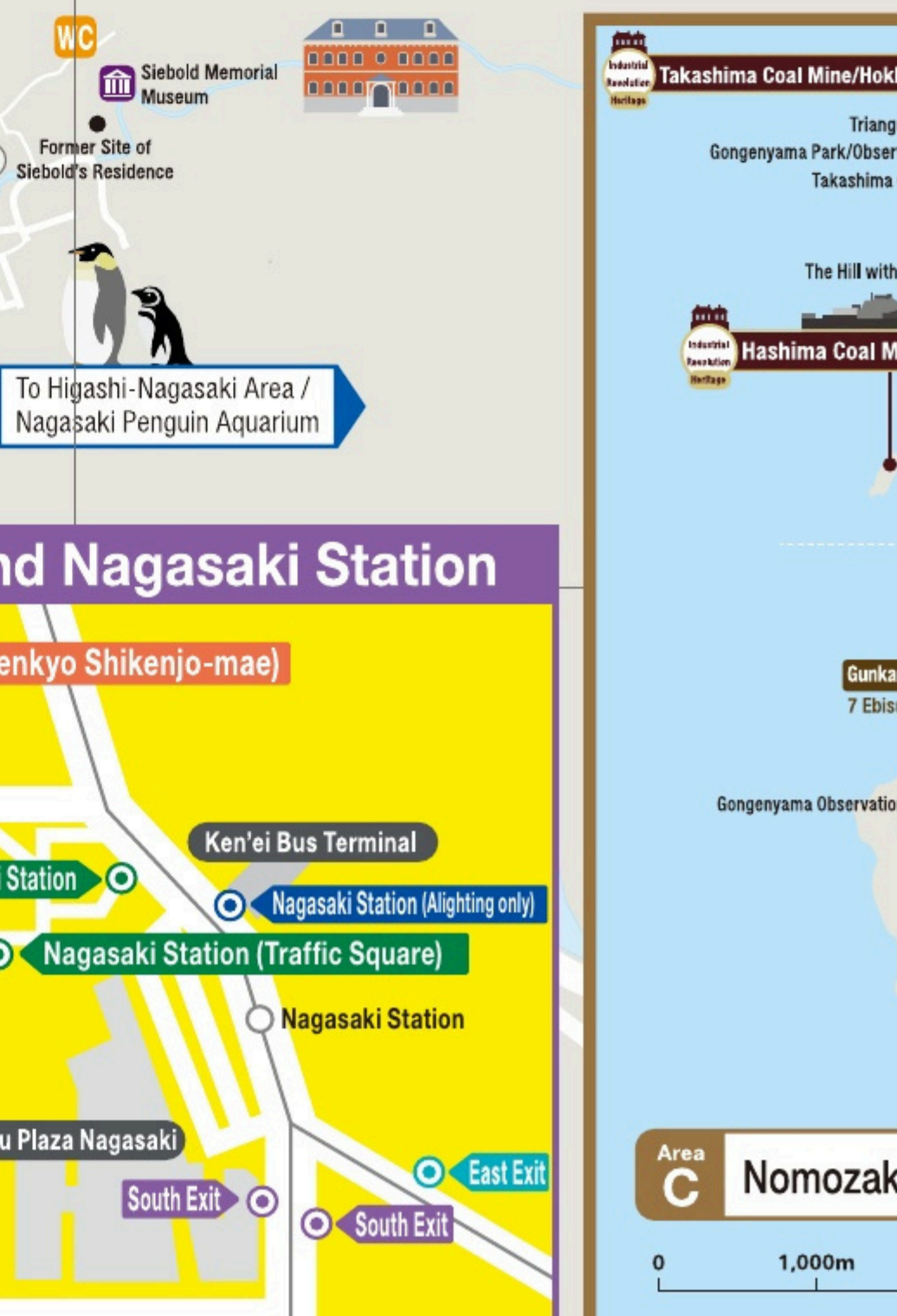
\*One-Day Pass is not sold on the train.

\*Information current as of December 2025

## Tram Route Map



## City Bus Route Map



## Bus Stops around Nagasaki Station

